

DU11



The DU11 is a **high-end** member of the BMSvision data collection terminals featuring a 7" touch screen and a graphical **intuitive web-based** user interface for user friendly interaction with the operator. The DU11 interacts as a front end and is the HMI for all BMSvision's MASTER systems. It is the perfect HMI for companies striving for paperless manufacturing.

Functions

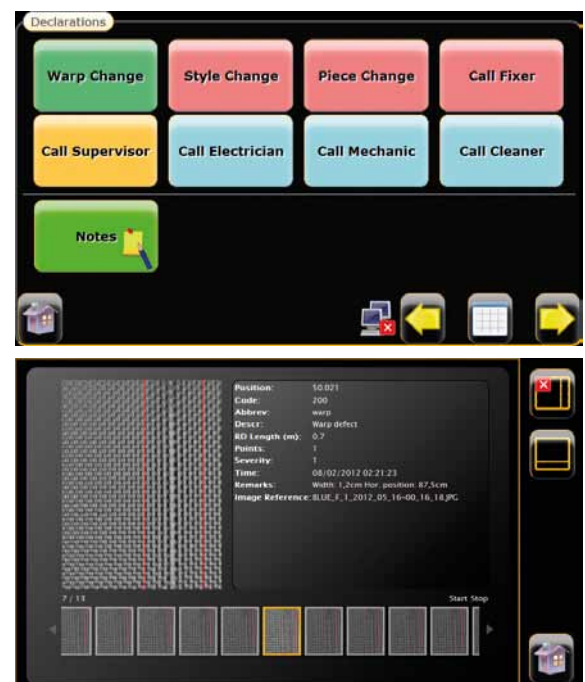
- Manual entry of down time reasons, on-loom defect declaration, ...
- Display production information: OEE, KPI's, efficiencies, meters produced, ...
- Display planning information: actual job status, next jobs planned, ...
- Document control: setup, quality, maintenance, instructions, ...
- Energy monitoring.
- Operator tracking.
- Traceability.
- Input via **WEB-DU**.
- Viewing the **MANAGEMENT DASHBOARD**.

(all functions are subject to licensing)

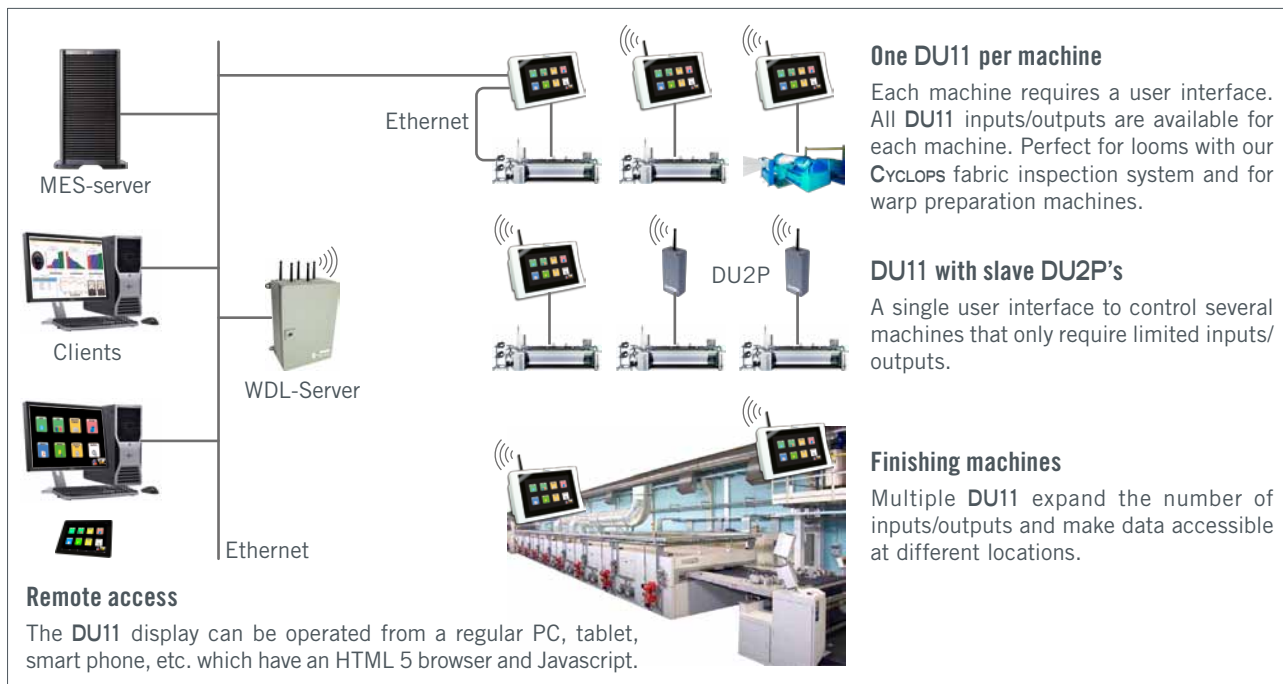
Features

- Direct access to all pages.
- Wireless (Bluetooth class 1) via **WDL-SERVER** or wired (Ethernet) connection to the central system.
- Remotely operable from any device that has an HTML 5 browser with Javascript.
- Continued operation and machine monitoring in case of network or server failure (optional).
- On screen language selection and unicode Chinese supported.
- Optional configurable pages.

7" touch screen Data Unit



Machine connection configurations



Technical specifications

Touch screen display

- 7" color LCD (152 x 91 mm).
- WVGA resolution: 800 x 480 pixels.

Power

- Different ways to power: 100 to 240 VAC, 24 VDC or Power over Ethernet (48 VDC).
- Low power consumption: 15 W.

Input/outputs for machine connections

- 16 electric isolated digital/counter inputs, suitable for 12 and 24 V systems. Can all be used either as counter input or as "automatic stop" input.
- 5 relay outputs (12 V / 5 W) which can be used to activate lamps, stop the machine, ...
- 2 electric isolated serial ports, software configurable RS232/422/485, VDI and Modbus compatible.
- 1 Ethernet port (LAN 1) to interface with the Ethernet port of the machine (if available).

Networking with BMSvision MES server

- Wireless (Bluetooth class 1) or wired (Ethernet, LAN 2).

Options

- Backup & Recovery function allowing a minimum of 24 hours local data storage in case of server or network failure.
- RFID tag reader.
- Barcode scanner.

DU11 part numbers: A901170 (WDL), A9011701 (Ethernet).

Other connections

- 2 USB ports:
 - USB 1 for connection of customer equipment like a barcode scanner
 - USB 2 for a memory stick, external WDL interface, ...
- 1 auxiliary Ethernet port (LAN 3), e.g. CycLOPS, KFD.

Housing

- Size: 250 x 170 x 90 mm (W x H x D).
- Weight: 1250 g.

Ingress protection rating

- Standard: IP54 (dust protected / splashing water).
On demand: IP65 (dust tight / water jets).
- The DU11 does not have a fan, nor ventilation holes.

Environment

- Operating temperature range: 0° to 50°C.
- Relative humidity: 20 to 80% non-condensing.

BMSvision Master systems

WEAVERMASTER: for the textile industry.
QUALIMASTER: fabric inspection and optimized cutting.
ENERGYMASTER: energy monitoring system.
SPINMASTER: for spinning plants.
FINIMASTER: for textile finishing plants.



www.bmsvision.com

© Belgian Monitoring Systems
Member of the Savio group



In Pursuit of Productivity

BMS bvba • Vlamingsstraat 16, 8560 Wevelgem, Belgium
Tel. +32 56 262 611 - Fax +32 56 262 690 - sales.bv@visionbms.com

BMS Vision Ltd • Capricorn Park, Blakewater Road, Blackburn, Lancashire, BB1 5QR, UK
Tel. +44 1254 662 244 - Fax +44 1254 267 100 - sales.bla@visionbms.com

BMSVision LLC • 4420 Taggart Creek Road, Suite 112, Charlotte, North Carolina 28208, USA
Tel. +1 704 392 9371 - Fax +1 704 399 5588 - sales@visionbmsusa.com