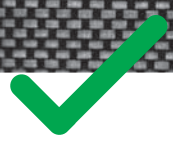
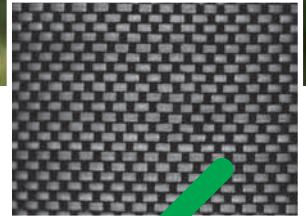
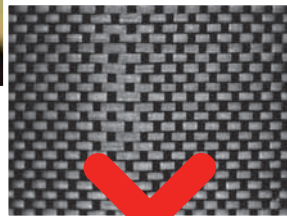
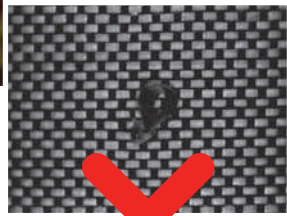
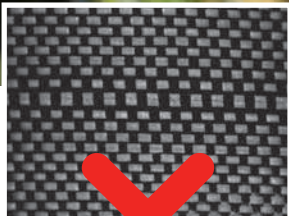


# Cyclops CF \*

AI-driven quality inspection of composite fabrics



Minimized  
production waste



Enhanced  
fabric quality



Consistent  
quality output



Less handling  
defects

\* **PATENT  
PENDING**

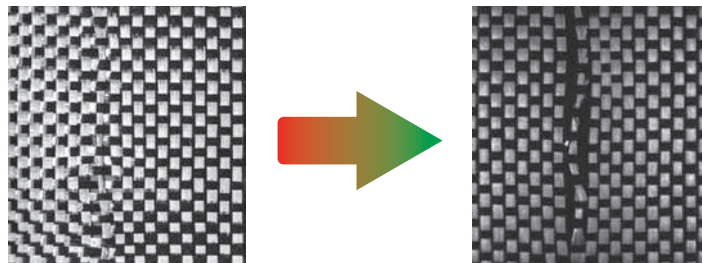
## Your problem

Quality inspection of composite fabrics is difficult because of the high degree of specular reflection.

## Our solution

Specially designed **CYCLOPS** CF measuring head:

- State-of-the-art camera.
- Custom illumination technology.
- AI-based anomaly detection algorithms.



## Principle

The **CYCLOPS** CF vision system uses a camera and illumination unit, installed on the on-loom take up. While scanning across the fabric, the camera takes images and transfers them to the image processing unit where AI-based anomaly detection algorithms analyze the texture of the fabric and detect fabric defects.

Thanks to the on-loom inspection the fabric does not need to pass on to the inspection table. Fewer handling actions means less chance of handling defects and a decrease of the quality control costs.

## Features & benefits

- Real-time defect detection on the loom.
- Integrated notification functionality.
- Fast and easy implementation.
- Wide range of defects can be recognized.
- Can be connected with our fabric inspection solution **QUALIMASTER**.

## Why BMSvision

- Over 45 years of experience in the textiles industry.
- **CYCLOPS** has been used worldwide for over 20 years.
- Specific R&D division dedicated to machine vision.

## Interested to know more?

Check out our website and ask for more information via [sales@bmsvision.com](mailto:sales@bmsvision.com).



## Cyclops references

# **HUESKER**  
Ideen. Ingenieure. Innovationen.

**Serge Ferrari**  
group

**INDORAMA**  
VENTURES  
> Mobility Group

**ZULEEG**

**RSP51**

**HiSPANO TEX**

**HEYtex®**

**TENCATE**

**Arville**

**ETTLIN**



**BMSvision**

[sales@bmsvision.com](mailto:sales@bmsvision.com)  
[www.bmsvision.com](http://www.bmsvision.com)

Belgium: +32 56 262 611  
United Kingdom: +44 1254 662 244

United States: +1 704 392 9371  
China: +86 512 8889 8800